

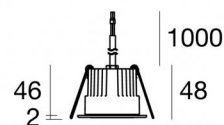
Downlights | 1 + 1 + 1 x powerLED 12 W DC 350 mA

CRI 80

81223M15



55



Technische Daten	
Installationsposition	Decke
Installationsumgebung	Outdoor
Lichtquelle	LED
Circuit structure	powerLED
Optik	Spot + Spot + Spot
Light emission direction	downward + downward + downward
Lampe Nennleistung	12 W DC
Lichtstrom (Lichtquelle)	1470 lm
Ähnlichste Farbtemperatur / Tone	2700 K
Farbwiedergabeindex	80 Ra
Gleichstrom/Gleichspannung	CC
Isolierklasse	3
IP	IP67
IK	IK10
Glühdrahtprüfung	850°
Direkte Montage auf normal entflammaren Oberflächen	Ja
CE	Ja
Einschließlich Driver	Nein
Leuchte dimmbar	DALI - 1-10V
Schwenkbarkeit	Nein
Drehbarkeit	Nein
Begehbarkeit	Nein
Überrollbarkeit	Nein
Einschließlich Kabel	Ja
Kabellänge	1 m
Harzbeschichtung	Ja
Typ Lichtabstrahlung	Einflammig
Nettogewicht	0.2 Kg
Schutz vor elektrostatischen Entladungen	Nein
Schutz vor Stoßspannungen	Nein
Technische Merkmale des Produkts	Acquastop - TVS

Oberfläche Gehäuse

Material	Stranggepresstes Aluminium EN AB - 46100
Farbe	Schwarz
Bearbeitungstyp	Offenporige Anodisierung + Pulverlackierung

Oberfläche Diffusor

Material	Extra-helles Glas - Gehärtet
Farbe	transparent

Oberfläche flansch

Material	Stahl AISI 316L
Farbe	Stahl
Bearbeitungstyp	Bürsten

Elektronik



89421
On/Off Driver 198~264V AC / 176~275V DC (1 art.)



C-E200006
On/Off Driver 198~264V AC / 180~275V DC (1 art.)

Cables Electrification

Cable connector	No
-----------------	----

Downlights | 1 + 1 + 1 x powerLED 12 W DC 350 mA | CRI 80 81223M15

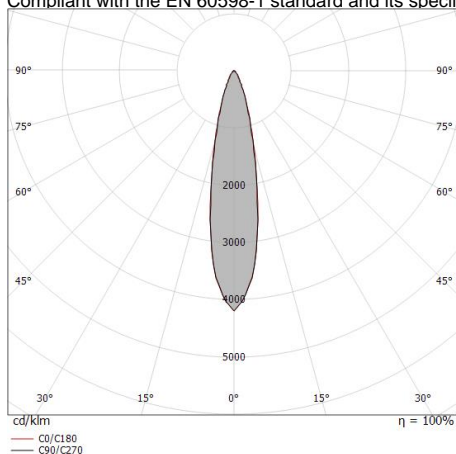
Single emission recessed downlights for outdoor application. The super warm white LED light source with a spot light distribution is composed of 1 powered LEDs with CCT of 2700 K and a CRI 80; the source luminous flux is 490 lm, with a 122.5 lm/W nominal luminous efficacy. The super warm white LED light source with a spot light distribution is composed of 1 powered LEDs with CCT of 2700 K and a CRI 80; the source luminous flux is 490 lm, with a 122.5 lm/W nominal luminous efficacy. The super warm white LED light source with a spot light distribution is composed of 1 powered LEDs with CCT of 2700 K and a CRI 80; the source luminous flux is 490 lm, with a 122.5 lm/W nominal luminous efficacy.

The device body is made of die-cast aluminium en ab - 46100 and features a black finish, processed by means of open pore anodizing + powder coating; the diffuser is made of extra clear glass - tempered. The ingress protection degree is IP67; the total weight is of 0.2 kg. The power supply driver is not provided and is to be ordered separately.

The total absorbed power is 12 W. The power supply cable is included and features a 1 m length.

The device features protection class III and can be ceiling-mounted, with a 55 mm diameter hole (in plasterboard) with an outer casing, code 99749 (for concrete or masonry).

Compliant with the EN 60598-1 standard and its specific provisions.



Distance [m]	Cone diameter [m]	illuminance [lx]
0.5	0.19 0.20	E(0°) 5143 E(C90) 2452 E(C0) 2434
1.0	0.39 0.39	E(0°) 1286 E(C90) 613 E(C0) 608
1.5	0.58 0.59	E(0°) 571 E(C90) 272 E(C0) 270
2.0	0.78 0.78	E(0°) 321 E(C90) 153 E(C0) 152
2.5	0.97 0.98	E(0°) 206 E(C90) 98 E(C0) 97
3.0	1.17 1.18	E(0°) 143 E(C90) 68 E(C0) 68

— C0/C180 (Half-peak divergence: 22.2°)
— C90/C270 (Half-peak divergence: 22.0°)

Energieeffizienzklasse

Dieses Produkt enthält 3 Lichtquellen der Energieeffizienzklasse E.

Illuminotechnical Eigenschaften

Light Output Ratio (LOR)	20 %
Lichtstrom (Lichtquelle)	1470 lm
Leuchten Lichtstrom	307 lm
Consumption	4 W
Leuchten Lichtausbeute	76 lm/W
Farbtemperatur	2700 K
Standard Deviation of Colour Matching	3 Step MacAdam
Farbwiedergabeindex	80 Ra
Black Body Locus	On
Standardumgebungstemperatur	-20 / +50°C
Typische Temperatur am Glas	40°C

LED Life / Failure Ratio

L70 B10 C0 247450h (at Tj 60 Ta 25)

UGR

UGR axial	15.6
UGR transversal	15.6
X=4H Y=8H	S=0.25H
Reflection factor	70/50/20

OPTICAL

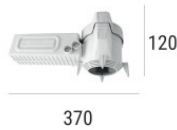
Optik C0/C180	22°
Light distribution simmetry	Symmetrical

COLOR VECTOR GRAPHIC

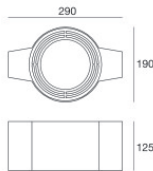
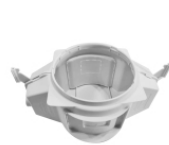


**Einbaugehäuse**

installationsposition: decke; typ installation: mauerwerk L=200mm, H=113mm, D=137mm.
Material:Polypropylen, farbe:Weiß.

Code
89373**Einbaugehäuse**

installationsposition: decke; typ installation: mauerwerk L=370mm, H=120mm, D=200mm.
Material:Polypropylen, farbe:Weiß.

Code
89374**Einbaugehäuse - (zu ergänzen mit Universalgrill 99750)**

installationsposition: decke; typ installation: mauerwerk L=290mm, H=125mm, D=190mm

Code
99749**Zubehör für Außengehäuse - Universalgitter für Außengehäuse 99749****Code**
99750