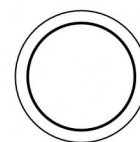
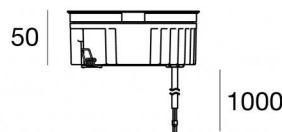


Uplights | 1 arrayLED 13 W DC 24 V | CRI 80  
81198M60



Ø125

| Technische Daten                                    |                                |
|---|--------------------------------|
| Typ   | Begehbar                       |
| Installationsposition                               | Boden                          |
| Installationsumgebung                               | Outdoor                        |
| Lichtquelle   | LED                            |
| Circuit structure                                   | arrayLED                       |
| Optik   | Wide Flood                     |
| Light emission direction                            | upward                         |
| Lampe Nennleistung                                  | 13 W DC                        |
| Lichtstrom (Lichtquelle)                            | 1724 lm                        |
| Eingangsspannungsbereich                            | 24 V                           |
| Ähnlichste Farbtemperatur / Tone                    | 2700 K                         |
| Farbwiedergabeindex                                 | 80 Ra                          |
| Gleichstrom/Gleichspannung                          | CV                             |
| Isolierklasse                                       | 3                              |
| IP  | IP68                           |
| Installationsbeschränkung                           | Nicht für Einsatz unter Wasser |
| IK  | IK10                           |
| Glühdrahtprüfung                                    | 850°                           |
| Direkte Montage auf normal entflammaren Oberflächen | Ja                             |
| CE  | Ja                             |
| Einschließlich Driver                               | Nein                           |
| C.V. - C.C. Converter                               | 24 V Konverter enthalten       |
| Leuchte dimmbar                                     | Nein                           |
| Schwenkbarkeit                                      | Nein                           |
| Drehbarkeit   | Nein                           |
| Begehbarkeit  | Ja                             |
| Überrollbarkeit                                     | Nein                           |
| Einschließlich Kabel                                | Ja                             |
| Kabellänge  | 1 m                            |
| Harzbeschichtung                                    | Ja                             |
| Typ Lichtabstrahlung                                | Einflammig                     |
| Nettogewicht  | 0.9 Kg                         |
| Schutz vor elektrostatischen Entladungen            | Nein                           |
| Schutz vor Stoßspannungen                           | Nein                           |
| Optiktechnologie                                    | Dark light                     |
| Technische Merkmale des Produkts                    | Acquastop                      |

#### Oberfläche Gehäuse

|                 |   |
|-----------------|---|
| Material        | Stranggepresstes Aluminium EN AB - 46100    |
| Farbe           | Schwarz                                     |
| Bearbeitungstyp | Offenporige Anodisierung + Pulverlackierung |

#### Oberfläche Diffusor

|                 |                              |
|-----------------|------------------------------|
| Material        | Extra-helles Glas - Gehärtet |
| Farbe           | transparent                  |
| Bearbeitungstyp | Siebdruck                    |

#### Oberfläche flansch

|                 |                 |
|-----------------|-----------------|
| Material        | Stahl AISI 316L |
| Farbe           | Stahl           |
| Bearbeitungstyp | Bürsten         |

#### Elektronik



89179  
On/Off Driver 198-264V AC 24 W (1 art.)



89359  
On/Off Driver 198-264V AC / 180-275V DC 48 W (1 - 3 art.)



99331  
On/Off Driver 198-264V AC / 176-275V DC 150 W (1 - 11 art.)



99660  
DALI - 1-10V Controller 24V DC 216 W (- art.)



C-E500023  
DALI - 1-10V - Push and Simply Dim Controller 8-53V DC 576 W (- art.)

#### Cables Electrification

|                 |    |
|-----------------|----|
| Cable connector | No |
|-----------------|----|

## Uplights | 1 arrayLED 13 W DC 24 V | CRI 80 81198M60

Single emission uplights for outdoor application. The super warm white LED light source with a wide flood light distribution is composed of 1 arrayed LEDs with CCT of 2700 K and a CRI 80; the source luminous flux is 1724 lm, with a 132.6 lm/W nominal luminous efficacy.

The device body is made of die-cast aluminium en ab - 46100 and features a black finish, processed by means of open pore anodizing + powder coating; the diffuser is made of extra clear glass - tempered with a silk-screening treatment. The ingress protection degree is IP68; the total weight is of 0.9 kg.

The total absorbed power is 13 W. The power supply cable is included and features a 1 m length.

The device features protection class III and can be floor-mounted with an outer casing, code 99857(for concrete or masonry).

Compliant with the EN 60598-1 standard and its specific provisions.

### Energieeffizienzklasse

ieses Produkt enthält eine Lichtquelle der Energieeffizienzklasse E.

### Illuminotechnical Eigenschaften

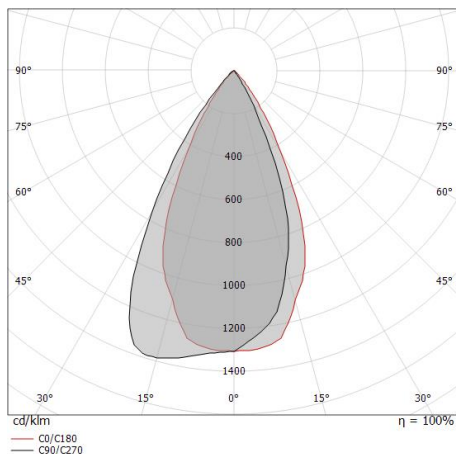
|                                       |                |
|---------------------------------------|----------------|
| Light Output Ratio (LOR)              | 53 %           |
| Lichtstrom (Lichtquelle)              | 1724 lm        |
| Leuchten Lichtstrom                   | 925 lm         |
| Consumption                           | 13 W           |
| Leuchten Lichtausbeute                | 71 lm/W        |
| Farbtemperatur                        | 2700 K         |
| Standard Deviation of Colour Matching | 2 Step MacAdam |
| Farbwiedergabeindex                   | 80 Ra          |
| Black Body Locus                      | On             |
| Standardumgebungstemperatur           | -20 / +50°C    |
| Typische Temperatur am Glas           | 40°C           |

### LED Life / Failure Ratio

L70 B10 C0 296960h (at Tj 65 Ta 25 )

### OPTICAL

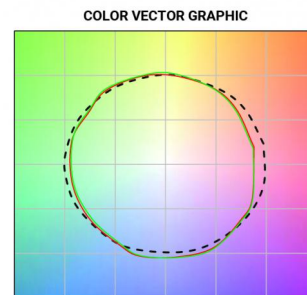
|                             |              |
|-----------------------------|--------------|
| Optik C0/C180               | 52°          |
| Light distribution simmetry | Asymmetrical |



|     |      |                |       |              |
|-----|------|----------------|-------|--------------|
| 0.5 | 0.49 | E(0°)<br>E(C0) | 26.0° | 4830<br>1759 |
| 1.0 | 0.98 | E(0°)<br>E(C0) | 26.0° | 1208<br>440  |
| 1.5 | 1.46 | E(0°)<br>E(C0) | 26.0° | 537<br>195   |
| 2.0 | 1.95 | E(0°)<br>E(C0) | 26.0° | 302<br>110   |
| 2.5 | 2.44 | E(0°)<br>E(C0) | 26.0° | 193<br>70    |
| 3.0 | 2.93 | E(0°)<br>E(C0) | 26.0° | 134<br>49    |

Distance [m] Cone diameter [m] Illuminance [lx]

— C0/C180 (Half-peak divergence: 52.0°)

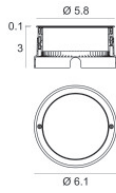




Einbaugehäuse


installationsposition: boden; typ installation: mauerwerk L=154mm, H=76mm, D=154mm.  
 Material:Kunststoff ABS, farbe:Schwarz.

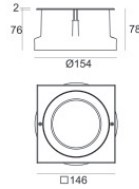
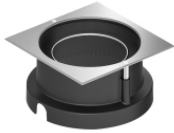
**Code**  
 99652



Einbaugehäuse


installationsposition: boden; typ installation: mauerwerk L=105mm, H=76mm, D=105mm.  
 Material:Stahl AISI 316, farbe:Stahl.

**Finish**  
 **Code**  
 99564



Einbaugehäuse

installationsposition: boden; typ installation: mauerwerk L=146mm, H=76mm, D=146mm.  
 Material:Stahl AISI 316, farbe:Stahl.

**Finish**  
 **Code**  
 99857