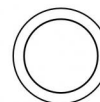




Uplights | 1
+ 1 arrayLED 16 W DC 220 mA | CRI 80
81187N60



Ø85

Technische Daten	
Typ	Begehbar
Installationsposition	Boden
Installationsumgebung	Outdoor
Lichtquelle	LED
Circuit structure	arrayLED
Optik	Wide Flood + Wide Flood
Light emission direction	upward + upward
Lampe Nennleistung	16 W DC
Lichtstrom (Lichtquelle)	2376 lm
Ähnlichste Farbtemperatur / Tone	4000 K
Farbwiedergabeindex	80 Ra
Gleichstrom/Gleichspannung	CC
Isolierklasse	3
IP	IP68
Installationsbeschränkung	Nicht für Einsatz unter Wasser
IK	IK10
Glühdrahtprüfung	850°
Direkte Montage auf normal entflammaren Oberflächen	Ja
CE	Ja
Einschließlich Driver	Nein
Leuchte dimmbar	DALI - 1-10V
Schwenkbarkeit	Nein
Drehbarkeit	Nein
Begehbarkeit	Ja
Überrollbarkeit	Nein
Einschließlich Kabel	Ja
Kabellänge	1 m
Harzbeschichtung	Ja
Typ Lichtabstrahlung	Einflammig
Nettogewicht	0.5 Kg
Schutz vor elektrostatischen Entladungen	Nein
Schutz vor Stoßspannungen	Nein
Technische Merkmale des Produkts	Acquastop

Oberfläche Gehäuse

Material	Stranggepresstes Aluminium EN AB - 46100
Farbe	Schwarz
Bearbeitungstyp	Offenporige Anodisierung + Pulverlackierung

Oberfläche Diffusor

Material	Extra-helles Glas - Gehärtet
Farbe	transparent
Bearbeitungstyp	Siebdruck

Oberfläche flansch

Material	Stahl AISI 316L
Farbe	Stahl
Bearbeitungstyp	Bürsten

Elektronik



99342
On/Off Driver 198-264V AC (1 art.)

Cables Electrification

Cable connector	No
-----------------	----

Uplights | 1 + 1 arrayLED 16 W DC 220 mA | CRI 80 81187N60

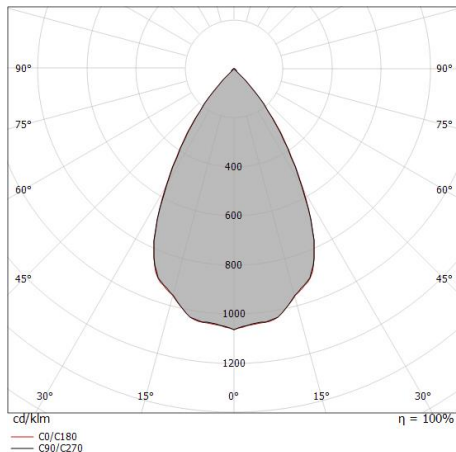
Single emission uplights for outdoor application. The natural white LED light source with a wide flood light distribution is composed of 1 arrayed LEDs with CCT of 4000 K and a CRI 80; the source luminous flux is 1188 lm, with a 148.5 lm/W nominal luminous efficacy. The natural white LED light source with a wide flood light distribution is composed of 1 arrayed LEDs with CCT of 4000 K and a CRI 80; the source luminous flux is 1188 lm, with a 148.5 lm/W nominal luminous efficacy.

The device body is made of die-cast aluminium en ab - 46100 and features a black finish, processed by means of open pore anodizing + powder coating; the diffuser is made of extra clear glass - tempered with a silk-screening treatment. The ingress protection degree is IP68; the total weight is of 0.5 kg. The power supply driver is not provided and is to be ordered separately.

The total absorbed power is 16 W. The power supply cable is included and features a 1 m length.

The device features protection class III and can be floor-mounted with an outer casing, code 99856 (for concrete or masonry).

Compliant with the EN 60598-1 standard and its specific provisions.



Distance [m]	Cone diameter [m]	illuminance [lx]
0.5	0.59 0.59	E(0°) 3638 E(C90) 1165 E(C0) 1165
1.0	1.18 1.18	E(0°) 909 E(C90) 291 E(C0) 291
1.5	1.77 1.77	E(0°) 404 E(C90) 129 E(C0) 129
2.0	2.36 2.37	E(0°) 227 E(C90) 73 E(C0) 73
2.5	2.95 2.96	E(0°) 146 E(C90) 47 E(C0) 47
3.0	3.53 3.55	E(0°) 101 E(C90) 32 E(C0) 32

— C0/C180 (Half-peak divergence: 61.2°)
— C90/C270 (Half-peak divergence: 61.0°)

Energieeffizienzklasse

Dieses Produkt enthält 2 Lichtquellen der Energieeffizienzklasse E.

Illuminotechnical Eigenschaften

Light Output Ratio (LOR)	36 %
Lichtstrom (Lichtquelle)	2376 lm
Leuchten Lichtstrom	857 lm
Consumption	8 W
Leuchten Lichtausbeute	107 lm/W
Farbtemperatur	4000 K
Standard Deviation of Colour Matching	2 Step MacAdam
Farbwiedergabeindex	80 Ra
Black Body Locus	On
Standardumgebungstemperatur	-20 / +50°C
Typische Temperatur am Glas	40°C

LED Life / Failure Ratio

L70 B10 C0 252000h (at Tj 65 Ta 25)

UGR

UGR axial	19.4
UGR transversal	19.5
X=4H Y=8H	S=0.25H
Reflection factor	70/50/20

OPTICAL

Optik C0/C180	61°
Light distribution simmetry	Symmetrical

COLOR VECTOR GRAPHIC





Einbaugehäuse

installationsposition: boden; typ installation: mauerwerk L=114mm, H=78mm, D=114mm.

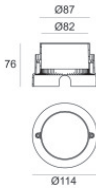
Material:Stahl AISI 316, farbe:Stahl.

Finish



Code

99563



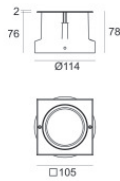
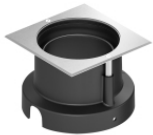
Einbaugehäuse

installationsposition: boden; typ installation: mauerwerk L=114mm, H=76mm, D=114mm.

Material:Kunststoff ABS, farbe:Schwarz.

Code

99651



Einbaugehäuse

installationsposition: boden; typ installation: mauerwerk L=105mm, H=76mm, D=105mm.

Material:Kunststoff ABS, farbe:Schwarz.

Code

99856