



Uplights | 1 x powerLED 8 W DC 630 mA | CRI 80
80559N06

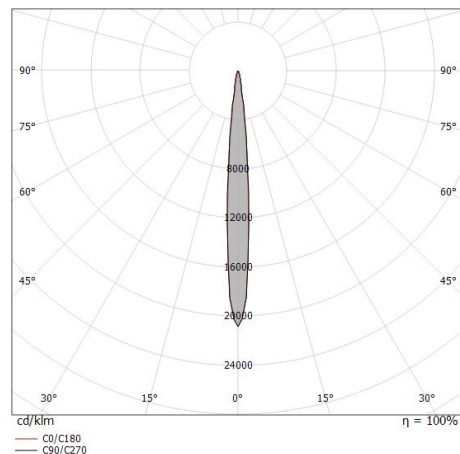
Single emission uplights for outdoor application. The natural white LED light source with a ultra spot light distribution is composed of 1 poweredLEDs with CCT of 4000 K and a CRI 80; the source luminous flux is 1013 lm, with a 126.6 lm/W nominal luminous efficacy.

The device body is made of die-cast aluminium en ab - 46100 and features a black finish, processed by means of open pore anodizing + powder coating; the diffuser is made of extra clear glass - tempered. The ingress protection degree is IP68; the total weight is of 0.678 kg. The power supply driver is not provided and is to be ordered separately.

The total absorbed power is 8 W. The power supply cable is included and features a 1 m length.

The device features protection class III and can be floor-mounted with an outer casing, code 99680(for concrete or masonry).

Compliant with the EN 60598-1 standard and its specific provisions.



Distance [m]	Cone diameter [m]	illuminance [lx]
0.5	0.08 0.08	E(0°) 41634 E(C90) 20869 E(C0) 20985
1.0	0.12 0.16	E(0°) 10409 E(C90) 5217 E(C0) 5246
1.5	0.25 0.24	E(0°) 4626 E(C90) 2319 E(C0) 2332
2.0	0.34 0.32	E(0°) 2602 E(C90) 1304 E(C0) 1312
2.5	0.42 0.40	E(0°) 1665 E(C90) 835 E(C0) 839
3.0	0.50 0.48	E(0°) 1157 E(C90) 580 E(C0) 583

Distance [m] Cone diameter [m] illuminance [lx]

— C0/C180 (Half-peak divergence: 9.2°)
— C90/C270 (Half-peak divergence: 9.6°)

Energieeffizienzklasse

ieses Produkt enthält eine Lichtquelle der Energieeffizienzklasse E.

Illuminotechnical Eigenschaften

Light Output Ratio (LOR)	49 %
Lichtstrom (Lichtquelle)	1013 lm
Leuchten Lichtstrom	499 lm
Consumption	8 W
Leuchten Lichtausbeute	62 lm/W
Farbtemperatur	4000 K
Standard Deviation of Colour Matching	3 Step MacAdam
Farbwiedergabeindex	80 Ra
Standardumgebungstemperatur	-20 / +50°C
Typische Temperatur am Glas	40°C

LED Life / Failure Ratio

L70 B10 C0 247450h (at Tj 60 Ta 25)

UGR

UGR axial	10.4
UGR transversal	9.5
X=4H Y=8H	S=0.25H
Reflection factor	70/50/20

OPTICAL

Optik C0/C180	9°
Light distribution simmetry	Symmetrical



Suelo_R Pro | Uplights | Accessories
80559N06



Einbaugehäuse

installationsposition: boden; typ installation: mauerwerk L=85mm, H=155mm, D=85mm.

Material:Kunststoff ABS, farbe:Schwarz.

Code

99680