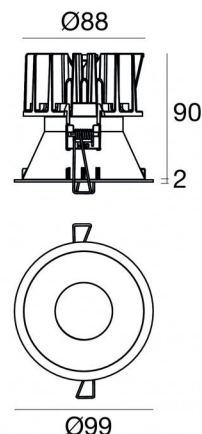


Warp_R EVO



Downlights | 1 arrayLED 9 W DC 700 mA | CRI 90
77369W10



Technische Daten	
Installationsposition	Decke
Installationsumgebung	Indoor
Lichtquelle	LED
Circuit structure	arrayLED
Optik	Spot
Light emission direction	downward
Lampe Nennleistung	9 W DC
Lichtstrom (Lichtquelle)	1119 lm
Eingangsspannungsbereich	700mA
Ähnlichste Farbtemperatur / Tone	3000 K
Farbwiedergabeindex	90 Ra
Gleichstrom/Gleichspannung	CC
Isolierklasse	3
IP	IP40
IP optisches System	IP65
Glühdrahtprüfung	850°
Direkte Montage auf normal entflammaren Oberflächen	Ja
CE	Ja
Einschließlich Driver	Nein
Leuchte dimmbar	DALI - 1-10V
Schwenkbarkeit	Nein
Drehbarkeit	Nein
Begehbarkeit	Nein
Überrollbarkeit	Nein
Einschließlich Kabel	Ja
Kabellänge	0.2 m
Harzbeschichtung	Nein
Typ Lichtabstrahlung	Einflammig
Nettogewicht	0.3 Kg
Schutz vor elektrostatischen Entladungen	Nein
Schutz vor Stoßspannungen	Nein
Optiktechnologie	Honey comb

Oberfläche Gehäuse

Material	Technopolymer
Farbe	Schwarz
Bearbeitungstyp	Lackierung

Oberfläche Diffusor

Material	Polycarbonat UV-beständige
Farbe	transparent

Oberfläche strahler

Material	Stranggepresstes Aluminium EN AB - 46100
Farbe	Aluminium
Bearbeitungstyp	Polieren

Elektronik



99147
On/Off Driver 198~264V AC (1 - 2 art.)



99735
Multi Power 198~264V AC / 180~275V DC (1 art.)



99733
1-10V Multi Power 198~264V AC / 180~275V DC (1 art.)



C-E100012
Push and Simply Dim - DALI-2 Controller (1 art.)



C-E100016
Push and Simply Dim - DALI-2 Controller (1 - 2 art.)

Cables Electrification

Cable connector	JST Quick connector Male + Female
-----------------	-----------------------------------



Downlights | 1 arrayLED 9 W DC 700 mA | CRI 90
77369W10

Single emission recessed downlights for indoor application. The warm white LED light source with a spot light distribution is composed of 1 arrayed LEDs with CCT of 3000 K and a CRI 90; the source luminous flux is 1119 lm, with a 124.3 lm/W nominal luminous efficacy.

The device body is made of technopolymer and features a black finish, processed by means of coating; the diffuser is made of uv resistant polycarbonate. The ingress protection degree is IP40; the total weight is of 0.3 kg. The power supply driver is not provided and is to be ordered separately.

The total absorbed power is 9 W. The power supply cable is included and features a 0.2 m length.

The device features protection class III and can be ceiling-mounted, with a 92 mm diameter hole (in plasterboard) with an outer casing, code 89374(for concrete or masonry).

Compliant with the EN 60598-1 standard and its specific provisions.

Energieeffizienzklasse

ieses Produkt enthält eine Lichtquelle der Energieeffizienzklasse E.

Illuminotechnical Eigenschaften

Light Output Ratio (LOR)	57 %
Lichtstrom (Lichtquelle)	1119 lm
Leuchten Lichtstrom	647 lm
Consumption	9 W
Leuchten Lichtausbeute	71 lm/W
Farbtemperatur	3000 K
Standard Deviation of Colour Matching	2 Step MacAdam
Farbwiedergabeindex	90 Ra

Standardumgebungstemperatur	-20 / +50°C
Typische Temperatur am Glas	40°C

LED Life / Failure Ratio

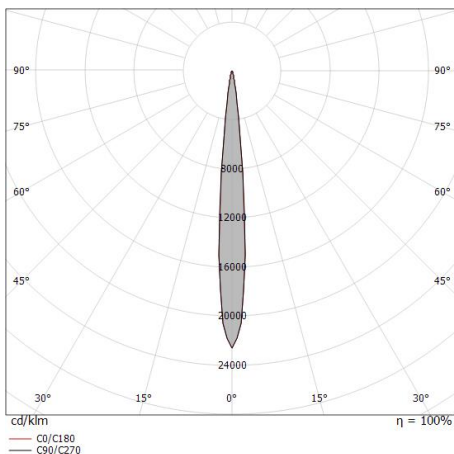
L70 B10 C0 112960h (at Tj 65 Ta 25)

UGR

UGR axial	-0.3
UGR transversal	-0.3
X=4H Y=8H	S=0.25H
Reflection factor	70/50/20

OPTICAL

Optik C0/C180	10°
Light distribution simmetry	Symmetrical



Distance [m]	Cone diameter [m]	illuminance [lx]
0.5	0.09 0.09	E(0°) 58368 E(C90) 5.1° 28871 E(C0) 4.9° 29225
1.0	0.18 0.17	E(0°) 14592 E(C90) 5.1° 7218 E(C0) 4.9° 7306
1.5	0.27 0.26	E(0°) 6485 E(C90) 5.1° 3208 E(C0) 4.9° 3247
2.0	0.36 0.34	E(0°) 3648 E(C90) 5.1° 1804 E(C0) 4.9° 1827
2.5	0.45 0.43	E(0°) 2335 E(C90) 5.1° 1155 E(C0) 4.9° 1169
3.0	0.54 0.51	E(0°) 1621 E(C90) 5.1° 802 E(C0) 4.9° 812

Distance [m] Cone diameter [m] illuminance [lx]

— C0/C180 (Half-peak divergence: 9.8°)
 — C90/C270 (Half-peak divergence: 10.2°)

Warp_R EVO



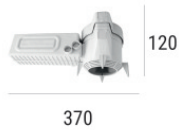
Warp_R EVO | Downlights | Accessories
77369W10



Einbaugehäuse

installationsposition: decke; typ installation: mauerwerk L=200mm, H=113mm, D=137mm.
Material:Polypropylen, farbe:Weiß.

Code
89373



Einbaugehäuse

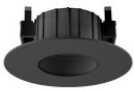
installationsposition: decke; typ installation: mauerwerk L=370mm, H=120mm, D=200mm.
Material:Polypropylen, farbe:Weiß.

Code
89374



Weißes Quantum_R Frontal-Kit

Code
83373



Schwarzes Vos_R Frontal-Kit

Code
83378



Weißes Vos_R Frontal-Kit

Code
83377



Schwarzes Quantum_R Frontal-Kit

Code
83374



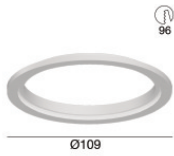
Weißes Warp_R frontal-Kit

Code
83375



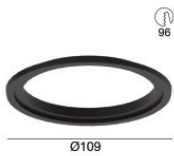
Schwarzes Warp_R frontal-Kit

Code
83376



Weisses vorderer adaptiver Flansch für Warp EVO

Code
83395



Schwarzer vorderer adaptiver Flansch für Warp EVO

Code
83390



Gold Quantum_R EVO Frontal Kit

Code
C-K400046



Kupfer Quantum_R EVO frontal Kit

Code
C-K400047



Kupfer Warp_R EVO frontal Kit

Code
C-K400049



Gold Warp_R EVO frontal Kit

Code
C-K400048



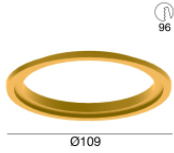
Gold Vos_R Frontal-Kit

Code
C-K400050



Kupfer Vos_R EVO Frontal Kit

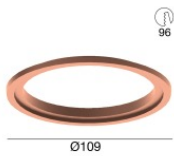
Code
C-K400051



Gold vorderer adaptiver Flansch für Warp EVO

Code

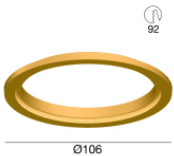
C-K400052



Kupfer vorderer adaptiver Flansch für Warp EVO

Code

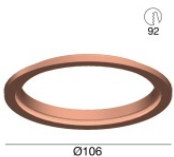
C-K400053



Gold vorderer adaptiver Flansch für Quantum EVO

Code

C-K400054



Kupfer vorderer adaptiver Flansch für Quantum EVO

Code

C-K400055



Blendschutz
Blendschutzart: wabenraster.
Material:Pom-C, farbe:Schwarz.

Code

83379



Diffusor
Diffusorart: filtro ellittico

Code

83380



Diffusor
Diffusorart: ästhetischer filter

Code

83381