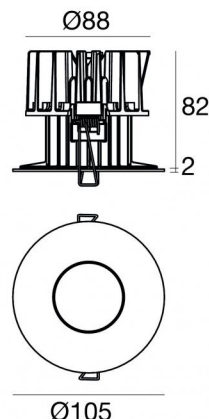
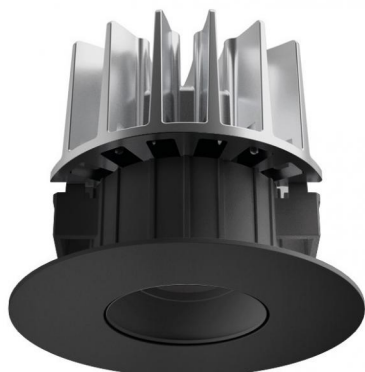




Downlights | 1 arrayLED 14 W DC 400 mA | CRI 90
77359N50



95

Technische Daten	
Installationsposition	Decke
Installationsumgebung	Indoor
Lichtquelle	LED
Circuit structure	arrayLED
Optik	Medium Wide Flood
Light emission direction	downward
Lampe Nennleistung	14 W DC
Lichtstrom (Lichtquelle)	2411 lm
Eingangsspannungsbereich	400mA
Ähnlichste Farbtemperatur / Tone	4000 K
Farbwiedergabeindex	90 Ra
Gleichstrom/Gleichspannung	CC
Isolierklasse	3
IP	IP40
IP optisches System	IP65
Glühdrahtprüfung	850°
Direkte Montage auf normal entflammaren Oberflächen	Ja
CE	Ja
Einschließlich Driver	Nein
Leuchte dimmbar	DALI - 1-10V
Schwenkbarkeit	Nein
Drehbarkeit	Nein
Begehbarkeit	Nein
Überrollbarkeit	Nein
Einschließlich Kabel	Ja
Kabellänge	0.2 m
Harzbeschichtung	Nein
Typ Lichtabstrahlung	Einflammig
Nettogewicht	0.3 Kg
Schutz vor elektrostatischen Entladungen	Nein
Schutz vor Stoßspannungen	Nein
Optiktechnologie	Honey comb

Oberfläche Gehäuse

Material	Technopolymer
Farbe	Schwarz
Bearbeitungstyp	Lackierung


Oberfläche Diffusor


Material	Polycarbonat UV-beständige
Farbe	transparent

Oberfläche strahler

Material	Stranggepresstes Aluminium EN AB - 46100
Farbe	Aluminium
Bearbeitungstyp	Polieren

Elektronik

 99734
Multi Power 198~264V AC / 180~275V DC (1 art.)

 99732
1-10V Multi Power 198~264V AC / 180~275V DC (1 art.)

 83322
Push and Simply Dim - DALI-2 Controller (1 art.)

Cables Electrification

Cable connector JST Quick connector Male + Female

Downlights | 1 arrayLED 14 W DC 400 mA | CRI 90 77359N50

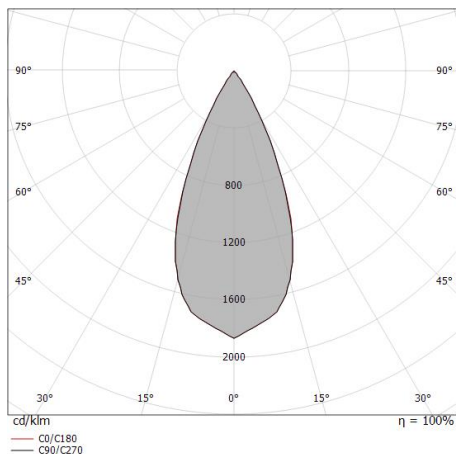
Single emission recessed downlights for indoor application. The natural white LED light source with a medium wide flood light distribution is composed of 1 arrayed LEDs with CCT of 4000 K and a CRI 90; the source luminous flux is 2411 lm, with a 172.2 lm/W nominal luminous efficacy.

The device body is made of technopolymer and features a black finish, processed by means of coating; the diffuser is made of uv resistant polycarbonate. The ingress protection degree is IP40; the total weight is of 0.3 kg. The power supply driver is not provided and is to be ordered separately.

The total absorbed power is 14 W. The power supply cable is included and features a 0.2 m length.

The device features protection class III and can be ceiling-mounted, with a 95 mm diameter hole (in plasterboard) with an outer casing, code 83065(for concrete or masonry).

Compliant with the EN 60598-1 standard and its specific provisions.



Distance [m]	Cone diameter [m]	illuminance [lx]
0.5	0.42	E(0°) 8557 E(C90) 3393 E(C0) 3370
1.0	0.84	E(0°) 2139 E(C90) 848 E(C0) 843
1.5	1.25	E(0°) 951 E(C90) 377 E(C0) 374
2.0	1.67	E(0°) 535 E(C90) 212 E(C0) 211
2.5	2.09	E(0°) 342 E(C90) 136 E(C0) 135
3.0	2.51	E(0°) 238 E(C90) 94 E(C0) 94

— C0/C180 (Half-peak divergence: 45.8°)
— C90/C270 (Half-peak divergence: 45.4°)

Energieeffizienzklasse

ieses Produkt enthält eine Lichtquelle der Energieeffizienzklasse E.

Illuminotechnical Eigenschaften

Light Output Ratio (LOR)	47 %
Lichtstrom (Lichtquelle)	2411 lm
Leuchten Lichtstrom	1145 lm
Consumption	14 W
Leuchten Lichtausbeute	81 lm/W
Farbtemperatur	4000 K
Standard Deviation of Colour Matching	2 Step MacAdam
Farbwiedergabeindex	90 Ra
Colour Rendering Index	60 R9
Black Body Locus	On
Standardumgebungstemperatur	-20 / +50°C
Typische Temperatur am Glas	40°C

LED Life / Failure Ratio

L70 B10 C0 252000h (at Tj 65 Ta 25)

UGR

UGR axial	14.9
UGR transversal	14.9
X=4H Y=8H	S=0.25H
Reflection factor	70/50/20









OPTICAL

Optik C0/C180	45°
Light distribution simmetry	Symmetrical

COLOR VECTOR GRAPHIC

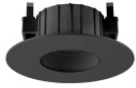




 <p>Ø106</p>	Kupfer vorderer adaptiver Flansch für Quantum EVO	Code <u>C-K400055</u>
 <p>Ø106</p>	Gold vorderer adaptiver Flansch für Quantum EVO	Code <u>C-K400054</u>
 <p>Ø109</p>	Kupfer vorderer adaptiver Flansch für Warp EVO	Code <u>C-K400053</u>
 <p>Ø109</p>	Gold vorderer adaptiver Flansch für Warp EVO	Code <u>C-K400052</u>
	Kupfer Vos_R EVO Frontal Kit	Code <u>C-K400051</u>
	Gold Vos_R Frontal-Kit	Code <u>C-K400050</u>
	Kupfer Warp_R EVO frontal Kit	Code <u>C-K400049</u>
	Gold Warp_R EVO frontal Kit	Code <u>C-K400048</u>

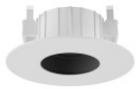


	Kupfer Quantum_R EVO frontal Kit	Code <u>C-K400047</u>
	Gold Quantum_R EVO Frontal Kit	Code <u>C-K400046</u>
	Optik Lichtverteilung: wide flood,Material Verkleidung: polycarbonat uv-beständige	Code <u>83384</u>
	Optik Lichtverteilung: medium flood,Material Verkleidung: ,polycarbonat uv- beständige,polycarbonat uv-beständige,polycarbonat uv-beständige	Code <u>83383</u>
	Optik Lichtverteilung: flood,Material Verkleidung: ,polycarbonat uv-beständige,polycarbonat uv- beständige,polycarbonat uv-beständige	Code <u>83382</u>
	Diffusor Diffusorart: ästhetischer filter	Code <u>83381</u>
	Diffusor Diffusorart: filtro ellittico	Code <u>83380</u>
	Blendschutz Blendschutzart: wabenraster. Material:Pom-C, farbe:Schwarz.	Code <u>83379</u>



Schwarzes Vos_R Frontal-Kit

Code
83378



Weißes Vos_R Frontal-Kit

Code
83377



Schwarzes Warp_R frontal-Kit

Code
83376



Weißes Warp_R frontal-Kit

Code
83375



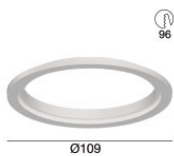
Schwarzes Quantum_R Frontal-Kit

Code
83374



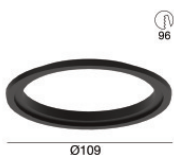
Weißes Quantum_R Frontal-Kit

Code
83373



Weisses vorderer adaptiver Flansch für Warp EVO






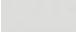
Code
83395



Schwarzer vorderer adaptiver Flansch für Warp EVO

Code
83390



 <p>Ø106</p>	<p>Weißer vorderer adaptiver Flansch für Quantum EVO</p>	<p>Code <u>83391</u></p>
 <p>Ø106</p>	<p>Schwarzer vorderer adaptiver Flansch für Quantum EVO 9W-14W</p>	<p>Code <u>83392</u></p>
 <p>137 200 113</p>	<p>Einbaugehäuse installationsposition: decke; typ installation: mauerwerk L=200mm, H=113mm, D=137mm. Material:Polypropylen, farbe:Weiß.</p>	<p>Code <u>89373</u></p>
 <p>370 120</p>	<p>Einbaugehäuse installationsposition: decke; typ installation: mauerwerk L=370mm, H=120mm, D=200mm. Material:Polypropylen, farbe:Weiß.</p>	<p>Code <u>89374</u></p>
 <p>108 109 12</p>	<p>Einbaugehäuse installationsposition: decke; typ installation: gipskarton L=109mm, H=12mm, D=109mm. Material:Aluminium, farbe:Eloxiertes Aluminium, bearbeitungstyp :Eloxierung.</p>	<p>Finish  Code <u>83065</u></p>