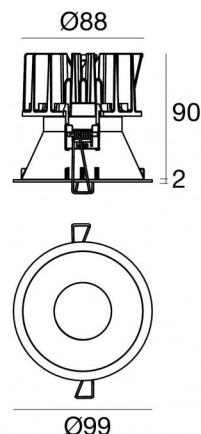


# Warp\_R EVO



Downlights | 1 arrayLED 9 W DC 700 mA | CRI 90  
77345W10



Technische Daten	
Installationsposition	Decke
Installationsumgebung	Indoor
Lichtquelle	LED
Circuit structure	arrayLED
Optik	Spot
Light emission direction	downward
Lampe Nennleistung	9 W DC
Lichtstrom (Lichtquelle)	1119 lm
Eingangsspannungsbereich	700mA
Ähnlichste Farbtemperatur / Tone	3000 K
Farbwiedergabeindex	90 Ra
Gleichstrom/Gleichspannung	CC
Isolierklasse	3
IP	IP40
IP optisches System	IP65
Glühdrahtprüfung	850°
Direkte Montage auf normal entflammaren Oberflächen	Ja
CE	Ja
Einschließlich Driver	Nein
Leuchte dimmbar	DALI - 1-10V
Schwenkbarkeit	Nein
Drehbarkeit	Nein
Begehbarkeit	Nein
Überrollbarkeit	Nein
Einschließlich Kabel	Ja
Kabellänge	0.2 m
Harzbeschichtung	Nein
Typ Lichtabstrahlung	Einflammig
Nettogewicht	0.3 Kg
Schutz vor elektrostatischen Entladungen	Nein
Schutz vor Stoßspannungen	Nein

## Oberfläche Gehäuse

Material	Technopolymer
Farbe	Schwarz
Bearbeitungstyp	Lackierung

## Oberfläche Diffusor

Material	Polycarbonat UV-beständige
Farbe	transparent

## Oberfläche strahler

Material	Stranggepresstes Aluminium EN AB - 46100
Farbe	Aluminium
Bearbeitungstyp	Polieren

## Elektronik



99147  
On/Off Driver 198-264V AC



99735  
Multi Power 198-264V AC / 180-275V DC



99733  
1-10V Multi Power 198-264V AC / 180-275V DC



C-E100012  
Push and Simply Dim - DALI-2 Controller



C-E100016  
Push and Simply Dim - DALI-2 Controller

## Cables Electrification

Cable connector	JST Quick connector Male + Female
-----------------	-----------------------------------



Downlights | 1 arrayLED 9 W DC 700 mA | CRI 90  
**77345W10**

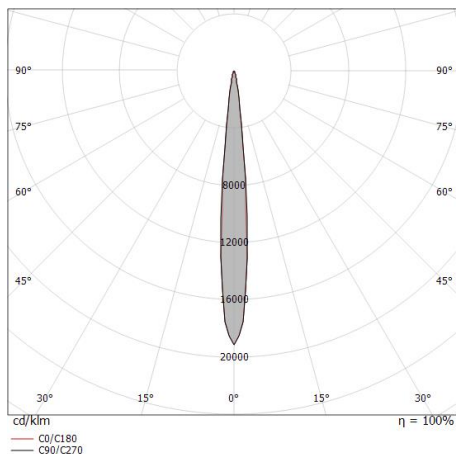
Single emission recessed downlights for indoor application. The warm white LED light source with a spot light distribution is composed of 1 arrayed LEDs with CCT of 3000 K and a CRI 90; the source luminous flux is 1119 lm, with a 124.3 lm/W nominal luminous efficacy.

The device body is made of technopolymer and features a black finish, processed by means of coating; the diffuser is made of uv resistant polycarbonate. The ingress protection degree is IP40; the total weight is of 0.3 kg. The power supply driver is not provided and is to be ordered separately.

The total absorbed power is 9 W. The power supply cable is included and features a 0.2 m length.

The device features protection class III and can be ceiling-mounted, with a 92 mm diameter hole (in plasterboard) with an outer casing, code 89374(for concrete or masonry).

Compliant with the EN 60598-1 standard and its specific provisions.



Distance [m]	Cone diameter [m]	illuminance [lx]
0.5	0.09 0.09	E(0°) 60230 E(C90) 5.2° 30281 E(C0) 5.0° 29783
1.0	0.18 0.17	E(0°) 15057 E(C90) 5.2° 7570 E(C0) 5.0° 7446
1.5	0.27 0.26	E(0°) 6692 E(C90) 5.2° 3365 E(C0) 5.0° 3309
2.0	0.36 0.35	E(0°) 3764 E(C90) 5.2° 1893 E(C0) 5.0° 1861
2.5	0.46 0.44	E(0°) 2409 E(C90) 5.2° 1211 E(C0) 5.0° 1191
3.0	0.55 0.52	E(0°) 1673 E(C90) 5.2° 841 E(C0) 5.0° 827

— C0/C180 (Half-peak divergence: 10.0°)  
 — C90/C270 (Half-peak divergence: 10.4°)

### Energieeffizienzklasse

ieses Produkt enthält eine Lichtquelle der Energieeffizienzklasse E.

### Illuminotechnical Eigenschaften

Light Output Ratio (LOR)	70 %
Lichtstrom (Lichtquelle)	1119 lm
Leuchten Lichtstrom	787 lm
Consumption	9 W
Leuchten Lichtausbeute	87 lm/W
Farbtemperatur	3000 K
Standard Deviation of Colour Matching	2 Step MacAdam
Farbwiedergabeindex	90 Ra

Standardumgebungstemperatur -20 / +50°C

Typische Temperatur am Glas 40°C

### LED Life / Failure Ratio

L70 B10 C0 112960h (at Tj 65 Ta 25 )

### UGR

UGR axial	6.1
UGR transversal	6.1
X=4H   Y=8H	S=0.25H
Reflection factor	70/50/20

### OPTICAL

Optik C0/C180	10°
Light distribution simmetry	Symmetrical

# Warp\_R EVO



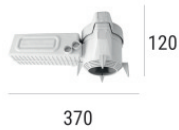
Warp\_R EVO | Downlights | Accessories  
**77345W10**



Einbaugehäuse

installationsposition: decke; typ installation: mauerwerk L=200mm, H=113mm, D=137mm.  
Material:Polypropylen, farbe:Weiß.

**Code**  
89373



Einbaugehäuse

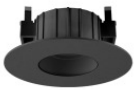
installationsposition: decke; typ installation: mauerwerk L=370mm, H=120mm, D=200mm.  
Material:Polypropylen, farbe:Weiß.

**Code**  
89374



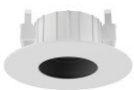
Weißes Quantum\_R Frontal-Kit

**Code**  
83373



Schwarzes Vos\_R Frontal-Kit

**Code**  
83378



Weißes Vos\_R Frontal-Kit

**Code**  
83377



Schwarzes Quantum\_R Frontal-Kit

**Code**  
83374



Weißes Warp\_R frontal-Kit

**Code**  
83375



Schwarzes Warp\_R frontal-Kit

**Code**  
83376



Weisses vorderer adaptiver Flansch für Warp EVO

**Code**  
83395



Schwarzer vorderer adaptiver Flansch für Warp EVO

**Code**  
83390



Gold Quantum\_R EVO Frontal Kit

**Code**  
C-K400046



Kupfer Quantum\_R EVO frontal Kit

**Code**  
C-K400047



Kupfer Warp\_R EVO frontal Kit

**Code**  
C-K400049



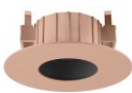
Gold Warp\_R EVO frontal Kit

**Code**  
C-K400048



Gold Vos\_R Frontal-Kit

**Code**  
C-K400050



Kupfer Vos\_R EVO Frontal Kit

**Code**  
C-K400051

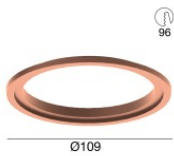


96

Gold vorderer adaptiver Flansch für Warp EVO

**Code**

C-K400052

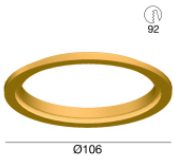


96

Kupfer vorderer adaptiver Flansch für Warp EVO

**Code**

C-K400053

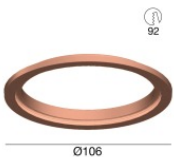


92

Gold vorderer adaptiver Flansch für Quantum EVO

**Code**

C-K400054



92

Kupfer vorderer adaptiver Flansch für Quantum EVO

**Code**

C-K400055



Blendschutz  
Blendschutzart: wabenraster.  
Material:Pom-C, farbe:Schwarz.

**Code**

83379



Diffusor  
Diffusorart: filtro ellittico

**Code**

83380



Diffusor  
Diffusorart: ästhetischer filter

**Code**

83381