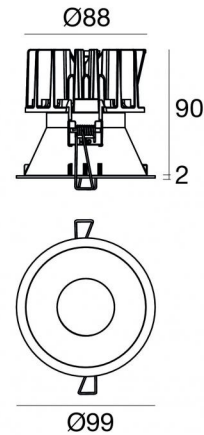


Warp_R EVO



Downlights | 1 arrayLED 9 W DC 700 mA | CRI 90
77345N10



Technische Daten	
Installationsposition	Decke
Installationsumgebung	Indoor
Lichtquelle	LED
Circuit structure	arrayLED
Optik	Spot
Light emission direction	downward
Lampe Nennleistung	9 W DC
Lichtstrom (Lichtquelle)	1196 lm
Eingangsspannungsbereich	700mA
Ähnlichste Farbtemperatur / Tone	4000 K
Farbwiedergabeindex	90 Ra
Gleichstrom/Gleichspannung	CC
Isolierklasse	3
IP	IP40
IP optisches System	IP65
Glühdrahtprüfung	850°
Direkte Montage auf normal entflammaren Oberflächen	Ja
CE	Ja
Einschließlich Driver	Nein
Leuchte dimmbar	DALI - 1-10V
Schwenkbarkeit	Nein
Drehbarkeit	Nein
Begehbarkeit	Nein
Überrollbarkeit	Nein
Einschließlich Kabel	Ja
Kabellänge	0.2 m
Harzbeschichtung	Nein
Typ Lichtabstrahlung	Einflammig
Nettogewicht	0.3 Kg
Schutz vor elektrostatischen Entladungen	Nein
Schutz vor Stoßspannungen	Nein

Oberfläche Gehäuse

Material	Technopolymer
Farbe	Schwarz
Bearbeitungstyp	Lackierung

Oberfläche Diffusor

Material	Polycarbonat UV-beständige
Farbe	transparent

Oberfläche strahler

Material	Stranggepresstes Aluminium EN AB - 46100
Farbe	Aluminium
Bearbeitungstyp	Polieren

Elektronik



99147
On/Off Driver 198-264V AC



99735
Multi Power 198-264V AC / 180-275V DC



99733
1-10V Multi Power 198-264V AC / 180-275V DC



C-E100012
Push and Simply Dim - DALI-2 Controller



C-E100016
Push and Simply Dim - DALI-2 Controller

Cables Electrification

Cable connector	JST Quick connector Male + Female
-----------------	-----------------------------------



Downlights | 1 arrayLED 9 W DC 700 mA | CRI 90
77345N10

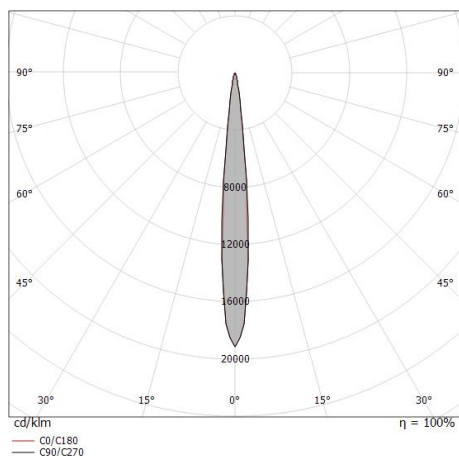
Single emission recessed downlights for indoor application. The natural white LED light source with a spot light distribution is composed of 1 arrayed LEDs with CCT of 4000 K and a CRI 90; the source luminous flux is 1196 lm, with a 132.9 lm/W nominal luminous efficacy.

The device body is made of technopolymer and features a black finish, processed by means of coating; the diffuser is made of uv resistant polycarbonate. The ingress protection degree is IP40; the total weight is of 0.3 kg. The power supply driver is not provided and is to be ordered separately.

The total absorbed power is 9 W. The power supply cable is included and features a 0.2 m length.

The device features protection class III and can be ceiling-mounted, with a 92 mm diameter hole (in plasterboard) with an outer casing, code 89374(for concrete or masonry).

Compliant with the EN 60598-1 standard and its specific provisions.



Distance [m]	Cone diameter [m]	illuminance [lx]
0.5	0.09 0.09	E(0°) 64281 E(C90) 5.2° 32317 E(C0) 5.0° 31786
1.0	0.18 0.17	E(0°) 16070 E(C90) 5.2° 8079 E(C0) 5.0° 7947
1.5	0.27 0.26	E(0°) 7142 E(C90) 5.2° 3591 E(C0) 5.0° 3532
2.0	0.36 0.35	E(0°) 4018 E(C90) 5.2° 2020 E(C0) 5.0° 1987
2.5	0.46 0.44	E(0°) 2571 E(C90) 5.2° 1293 E(C0) 5.0° 1271
3.0	0.55 0.52	E(0°) 1786 E(C90) 5.2° 898 E(C0) 5.0° 883

Distance [m] Cone diameter [m] illuminance [lx]

— C0/C180 (Half-peak divergence: 10.0°)
— C90/C270 (Half-peak divergence: 10.4°)

Energieeffizienzklasse

ieses Produkt enthält eine Lichtquelle der Energieeffizienzklasse E.

Illuminotechnical Eigenschaften

Light Output Ratio (LOR)	70 %
Lichtstrom (Lichtquelle)	1196 lm
Leuchten Lichtstrom	839 lm
Consumption	9 W
Leuchten Lichtausbeute	93 lm/W
Farbtemperatur	4000 K
Standard Deviation of Colour Matching	2 Step MacAdam
Farbwiedergabeindex	90 Ra
Standardumgebungstemperatur	-20 / +50°C
Typische Temperatur am Glas	40°C

LED Life / Failure Ratio

L70 B10 C0 112960h (at Tj 65 Ta 25)

UGR

UGR axial	6.3
UGR transversal	6.3
X=4H Y=8H	S=0.25H
Reflection factor	70/50/20

OPTICAL

Optik C0/C180	10°
Light distribution simmetry	Symmetrical

Warp_R EVO



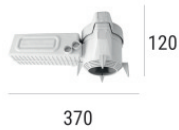
Warp_R EVO | Downlights | Accessories
77345N10



Einbaugehäuse

installationsposition: decke; typ installation: mauerwerk L=200mm, H=113mm, D=137mm.
Material:Polypropylen, farbe:Weiß.

Code
89373



Einbaugehäuse

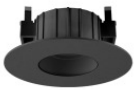
installationsposition: decke; typ installation: mauerwerk L=370mm, H=120mm, D=200mm.
Material:Polypropylen, farbe:Weiß.

Code
89374



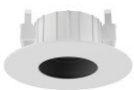
Weißes Quantum_R Frontal-Kit

Code
83373



Schwarzes Vos_R Frontal-Kit

Code
83378



Weißes Vos_R Frontal-Kit

Code
83377



Schwarzes Quantum_R Frontal-Kit

Code
83374



Weißes Warp_R frontal-Kit

Code
83375



Schwarzes Warp_R frontal-Kit

Code
83376



Weisses vorderer adaptiver Flansch für Warp EVO

Code
83395



Schwarzer vorderer adaptiver Flansch für Warp EVO

Code
83390



Gold Quantum_R EVO Frontal Kit

Code
C-K400046



Kupfer Quantum_R EVO frontal Kit

Code
C-K400047



Kupfer Warp_R EVO frontal Kit

Code
C-K400049



Gold Warp_R EVO frontal Kit

Code
C-K400048



Gold Vos_R Frontal-Kit

Code
C-K400050



Kupfer Vos_R EVO Frontal Kit

Code
C-K400051

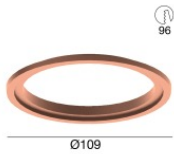


96

Gold vorderer adaptiver Flansch für Warp EVO

Code

C-K400052

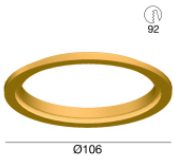


96

Kupfer vorderer adaptiver Flansch für Warp EVO

Code

C-K400053

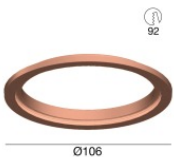


92

Gold vorderer adaptiver Flansch für Quantum EVO

Code

C-K400054



92

Kupfer vorderer adaptiver Flansch für Quantum EVO

Code

C-K400055



Blendschutz

Blendschutzart: wabenraster.

Material:Pom-C, farbe:Schwarz.

Code

83379



Diffusor

Diffusorart: filtro ellittico

Code

83380



Diffusor

Diffusorart: ästhetischer filter

Code

83381