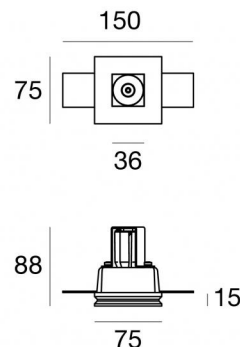
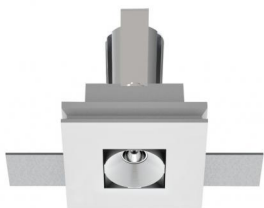


# Gypsum Cell



Downlights | 1 x powerLED 2 W DC 630 mA | CRI 90  
64630M45



Technische Daten	
Installationsposition	Decke
Installationsumgebung	Indoor
Lichtquelle	LED
Circuit structure	powerLED
Optik	Medium Wide Flood
Light emission direction	downward
Lampe Nennleistung	2 W DC
Lichtstrom (Lichtquelle)	199 lm
Eingangsspannungsbereich	630mA
Ähnlichste Farbtemperatur / Tone	2700 K
Farbwiedergabeindex	90 Ra
Gleichstrom/Gleichspannung	CC
Isolierklasse	3
IP	IP20
Glühdrahtprüfung	850°
Direkte Montage auf normal entflammaren Oberflächen	Ja
CE	Ja
Einschließlich Driver	Nein
Leuchte dimmbar	DALI - 1-10V
Schwenkbarkeit	Nein
Drehbarkeit	Nein
Begehbarkeit	Nein
Überrollbarkeit	Nein
Einschließlich Kabel	Ja
Kabellänge	0.170 m
Harzbeschichtung	Nein
Typ Lichtabstrahlung	Einflammig
Nettogewicht	0.42 Kg
Schutz vor elektrostatischen Entladungen	Nein
Schutz vor Stoßspannungen	Nein
Technische Merkmale des Produkts	TVS

## Oberfläche Gehäuse

Material	gesso
Farbe	Weiß


## Oberfläche Diffusor

Material	Pet
Farbe	Weiß


## Oberfläche strahler


Material	Stranggepresstes Aluminium EN AB - 46100
Bearbeitungstyp	Trommelung

## Elektronik

 89147  
On/Off Driver 198~264V AC / 180~275V DC (1 - 2 art.)

 99105  
On/Off Driver 198~264V AC (1 - 12 art.)

 99374  
On/Off Driver 198~264V AC / 176~275V DC 75 W (1 - 37 art.)

 99710  
1-10V Converter 24V DC (1 art.)

 99713  
DALI Converter 24V DC (1 art.)

 99376  
On/Off Driver 198~264V AC (1 - 6 art.)

## Cables Electrification

Cable connector	No
-----------------	----

Downlights | 1 x powerLED 2 W DC 630 mA | CRI 90  
**64630M45**

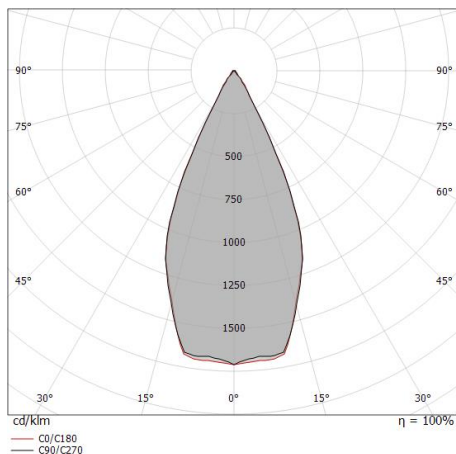
Single emission recessed downlights for indoor application. The super warm white LED light source with a medium wide flood light distribution is composed of 1 powered LEDs with CCT of 2700 K and a CRI 90; the source luminous flux is 199 lm, with a 99.5 lm/W nominal luminous efficacy.

The device body is made of plaster and features a white finish; the diffuser is made of pet. The ingress protection degree is IP20; the total weight is of 0.42 kg. The power supply driver is not provided and is to be ordered separately.

The total absorbed power is 2 W. The power supply cable is included and features a 0.170 m length.

The device features protection class III and can be ceiling-mounted, with a 85 x 85 mm hole (in plasterboard).

Compliant with the EN 60598-1 standard and its specific provisions.



Distance [m]	Cone diameter [m]	illuminance [lx]
0.5	0.45 0.44	E(0°) 712 E(C90) 24.1° 271 E(C0) 23.9° 275
1.0	0.89 0.89	E(0°) 178 E(C90) 24.1° 68 E(C0) 23.9° 69
1.5	1.34 1.33	E(0°) 79 E(C90) 24.1° 30 E(C0) 23.9° 31
2.0	1.79 1.77	E(0°) 44 E(C90) 24.1° 17 E(C0) 23.9° 17
2.5	2.24 2.22	E(0°) 28 E(C90) 24.1° 11 E(C0) 23.9° 11
3.0	2.68 2.66	E(0°) 20 E(C90) 24.1° 8 E(C0) 23.9° 8

— C0/C180 (Half-peak divergence: 47.8°)  
 — C90/C270 (Half-peak divergence: 48.2°)

### Energieeffizienzklasse

ieses Produkt enthält eine Lichtquelle der Energieeffizienzklasse F.

### Illuminotechnical Eigenschaften

Light Output Ratio (LOR)	52 %
Lichtstrom (Lichtquelle)	199 lm
Leuchten Lichtstrom	104 lm
Consumption	2,0 W
Leuchten Lichtausbeute	52 lm/W
Farbtemperatur	2700 K
Standard Deviation of Colour Matching	3 Step MacAdam
Farbwiedergabeindex	90 Ra

Standardumgebungstemperatur	-20 / +50°C
Typische Temperatur am Glas	40°C

### LED Life / Failure Ratio

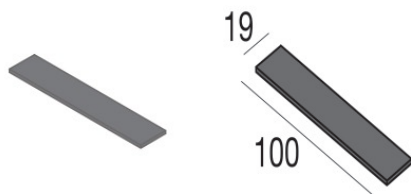
L70 B20 C0 214455h (at Tj 60 Ta 25 )

### UGR

UGR axial	14.6
UGR transversal	14.2
X=4H   Y=8H	S=0.25H
Reflection factor	70/50/20

### OPTICAL

Optik C0/C180	48°
Light distribution simmetry	Symmetrical



Dicken - KIT Dicken für die Montage auf Gipskarton

**Code**

60830